



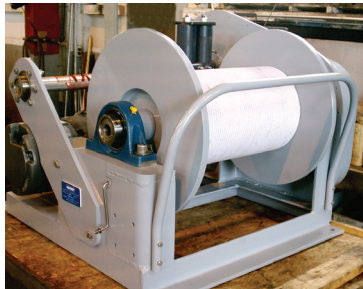
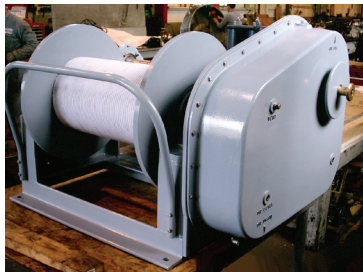
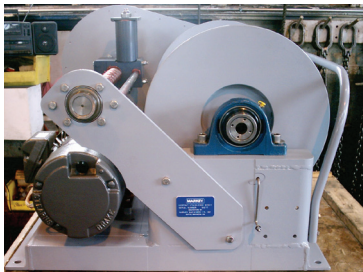
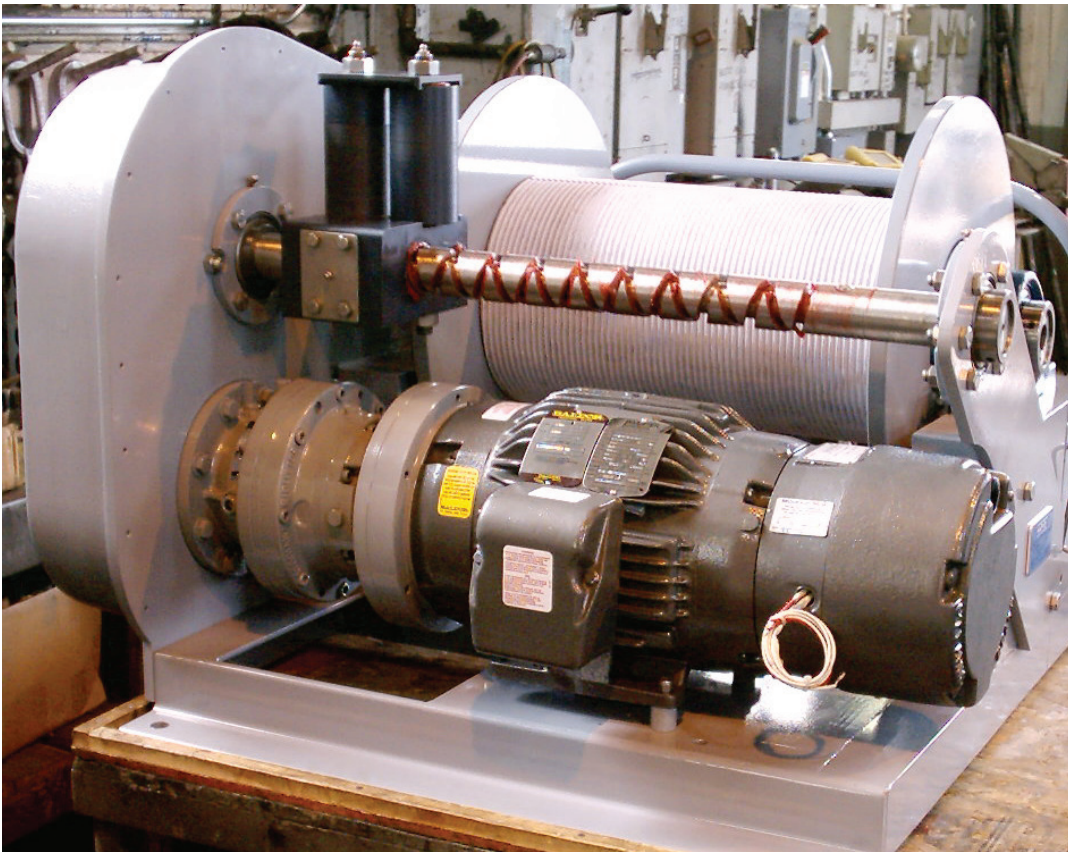
# COM-5

## Electric Single Drum Research Winch

The COM-5 is a compact, lightweight, single drum research winch with variable speed electric motor drive and level-wind designed for use with industry standard CTD's, water sampling carousels, and payloads typically used on inshore and coastal research vessels.

### WINCH SYSTEM SPECIFICATIONS

- ◆ Max. Drum Capacity: 1000M of 0.322 (6.5mm) EM cable.
- ◆ Max. Total Deck Lift: 897 lbs (394kg).
- ◆ Variable Speed Control: 0 to 70 meters/min cable speed.
- ◆ Electric Motor & Drive: 5 HP, AC-Variable frequency.
- ◆ Winch Control: Handheld pendant control pad on 25' cable (for remote control from a safe location).
- ◆ Power Requirements: 220VAC 3 Phase, 60Hz, 15A. Other source voltage options available.
- ◆ Approximate Weight: Without cable, 845 lbs (384kg).
- ◆ Winch Dimensions: 29.2" H x 46.9" W x 39.2" D.



## Markey Machinery Company, Inc.

7266 8th Avenue South, Seattle, WA 98108

Ph: (206) 622-4697 Toll Free: (800) 637-3430 Fax: (206) 623-9839

Email: [info@markeymachinery.com](mailto:info@markeymachinery.com)

Represented by:  
**Griffin & Associates**  
355 Grow Avenue NW, Bainbridge Island, WA 98110 (USA)  
Ph: (206) 595-9507 Email: [bagriffin@griffinassociates.com](mailto:bagriffin@griffinassociates.com)



Represented by:  
**JH Menge & Company, Inc.**  
5825 Plouche Street, Harahan, LA 70123 (USA)  
Ph: (504) 733-4871 Email: [fclatour@jhmenge.com](mailto:fclatour@jhmenge.com)

