



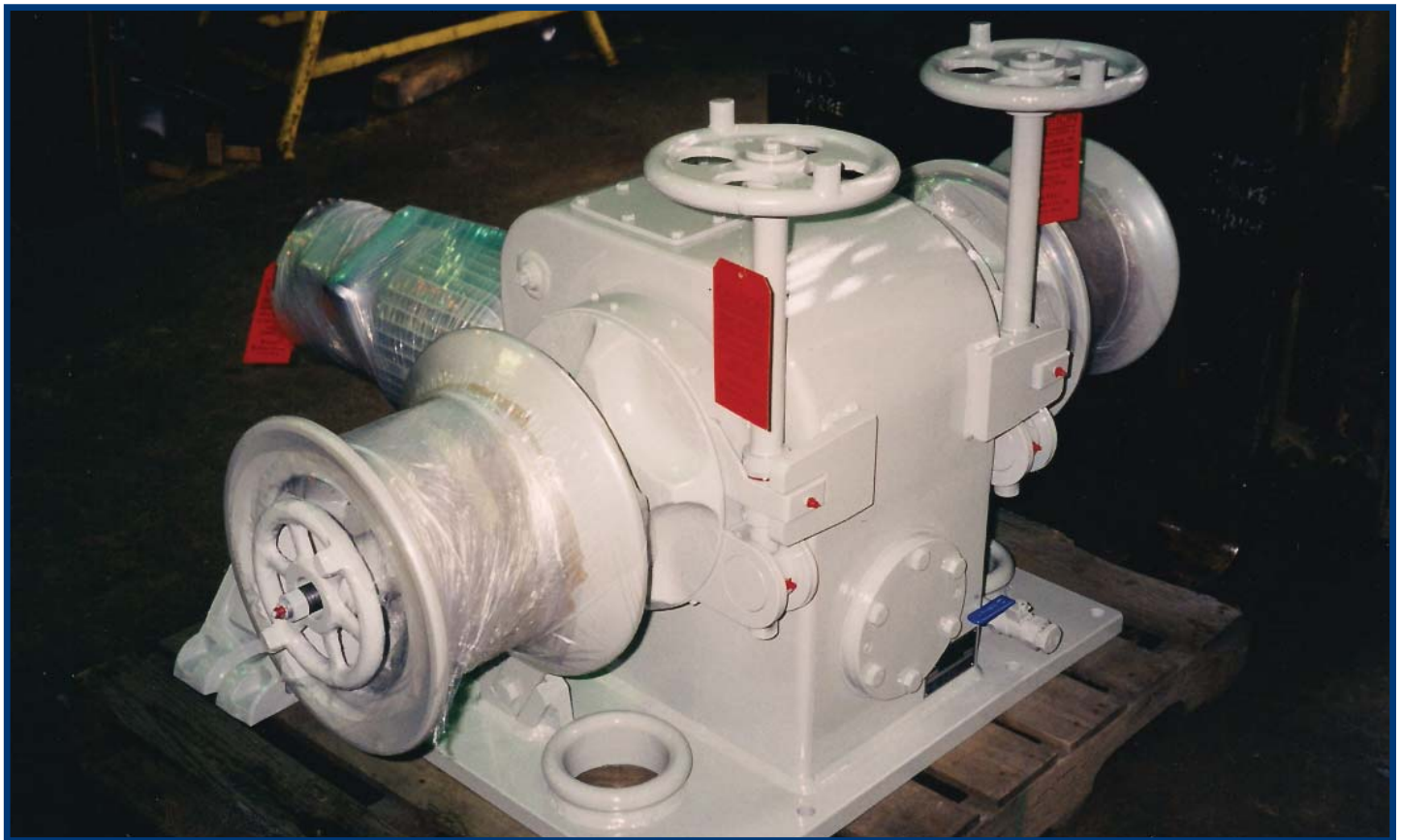
# WEW-12

## Electric Anchor Windlass

The WEW-12 is an electric anchor windlass featuring double five-pocket wildcat configuration and dual 10-inch warping heads. Rugged construction and low maintenance requirements make it suitable for a wide variety of chain handling applications. Electrical components meet all ABS, USCG, and IEEE-45 marine standards for safety and reliability.

### Winch System Specifications

- ◆ Wildcat Specifications: Dual five-pocket wildcat, for 3/4" (19mm) grade 3 stud-link anchor chain
- ◆ Rated Performance: Wildcats: 6000 lbs / 27 kN pull at 33 ft/min / 10 m/min  
Warping Heads: 6000 lbs / 27 kN pull at 34 ft/min / 10 m/min
- ◆ Electric Drive: 7.5HP / 6kW, 208/3/60 Marine Duty motor with fail-safe brake
- ◆ Wildcat Braking: 150% of motor torque
- ◆ Wildcat Control: Water-proof 3 button control station
- ◆ Approximate Weight: 2,000 lbs / 907 kg



## Markey Machinery Company, Inc.

7266 8th Avenue South, Seattle, WA 98108

Ph: (206) 622-4697 Toll Free: (800) 637-3430 Fax: (206) 623-9839

Email: [info@markeymachinery.com](mailto:info@markeymachinery.com)

Represented by:

**Griffin & Associates**

355 Grow Avenue NW, Bainbridge Island, WA 98110 (USA)

Ph: (206) 595-9507 Email: [bagriffin@griffinassociates.com](mailto:bagriffin@griffinassociates.com)



ISO 9001:2008 QMS

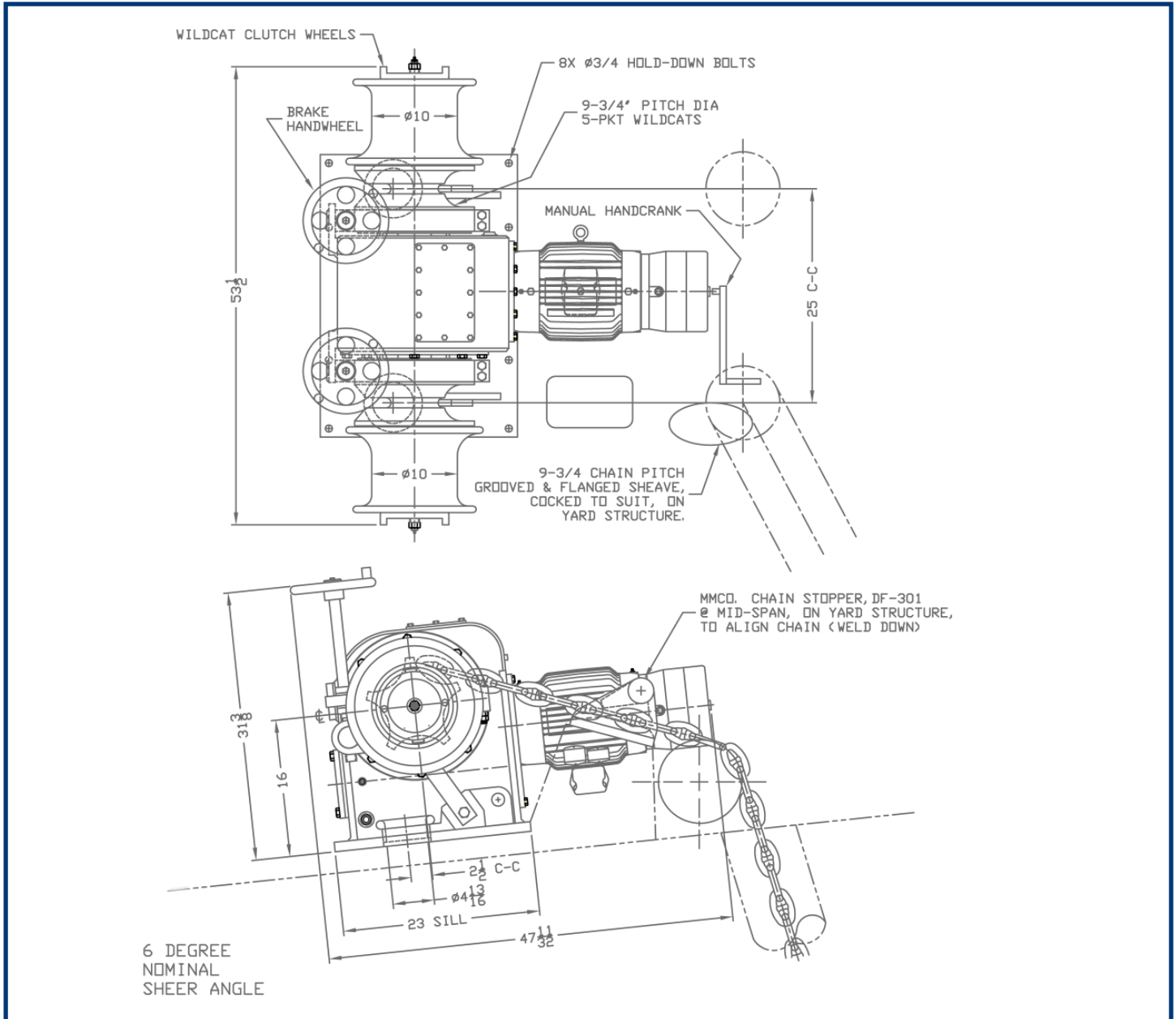
Represented by:

**JH Menge & Company, Inc.**

5825 Plaque Street, Harahan, LA 70123 (USA)

Ph: (504) 733-4871 Email: [fclatour@jhmenge.com](mailto:fclatour@jhmenge.com)

# Markey WEW-12 Windlass



## Windlass System Options

- ◆ Models available for other chain sizes
- ◆ Single or dual wildcats, with or without warping heads
- ◆ Equipment certification by third party (DNV, ABS, Lloyd's) arranged
- ◆ A variety of power configurations can be accommodated
- ◆ Performance ratings can be tailored to suit specific applications

Markey's rugged windlasses are built to the highest quality workboat standards using materials and processes providing maximum life and minimum maintenance in marine and outdoor applications.

© 2011 MMCo 17917

