



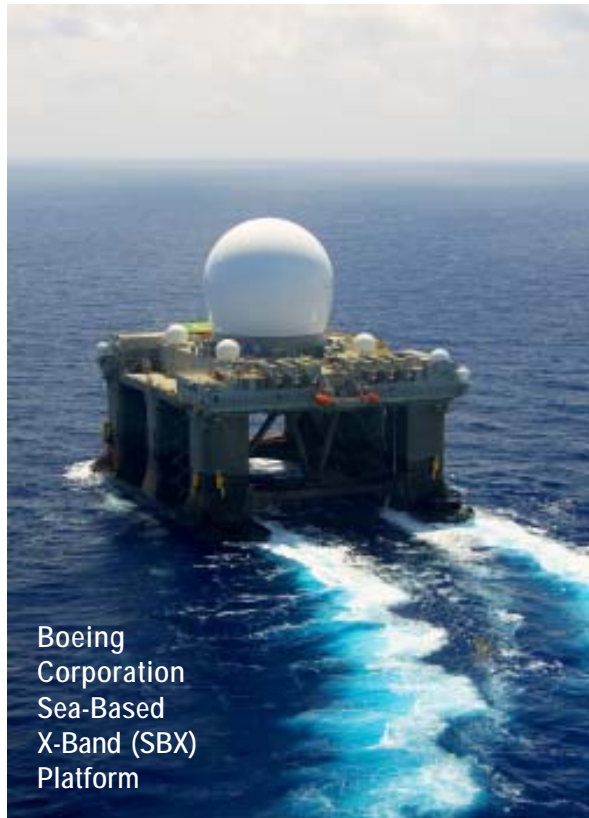
WYS-60

Hydraulic Anchor Windlass

The WYS-60 is a high-performance hydraulic anchor handling system that includes HPU, remote control interface, and five-pocket wildcat for 3.75" (95mm) stud-link anchor chain. Rugged construction, extreme pulling and braking power, and Markey's legendary reliability makes the WYS-60 suitable for critical applications and emergency anchor handling needs.

WINCH SYSTEM SPECIFICATIONS

- ◆ **Wildcat Specifications:** Five-pocket wildcat, for 3.75" (95mm) grade 3 stud-link anchor chain.
- ◆ **Rated Performance:** 255,150 lbs pull at 30 ft/min.
- ◆ **Hydraulic Drive:** HPU-350 Electro-hydraulic power unit including two 175 HP, 1800 RPM, 480/3/60 continuous-duty motors (or customer-supplied system for 200 GPM @ 2710 PSI).
- ◆ **Wildcat Braking:** Braking capacity 611,400 lbs (60% proof load of chain).
- ◆ **Wildcat Control:** Pushbutton/Joystick control for chain stopper, clutch, brake, anchor raise/stop/lower.
- ◆ **Wildcat Dimensions:** 132.5" H x 124.8" W x 161.8" D **Approximate Weight:** 67,300 lbs



Boeing Corporation
Sea-Based X-Band (SBX) Platform

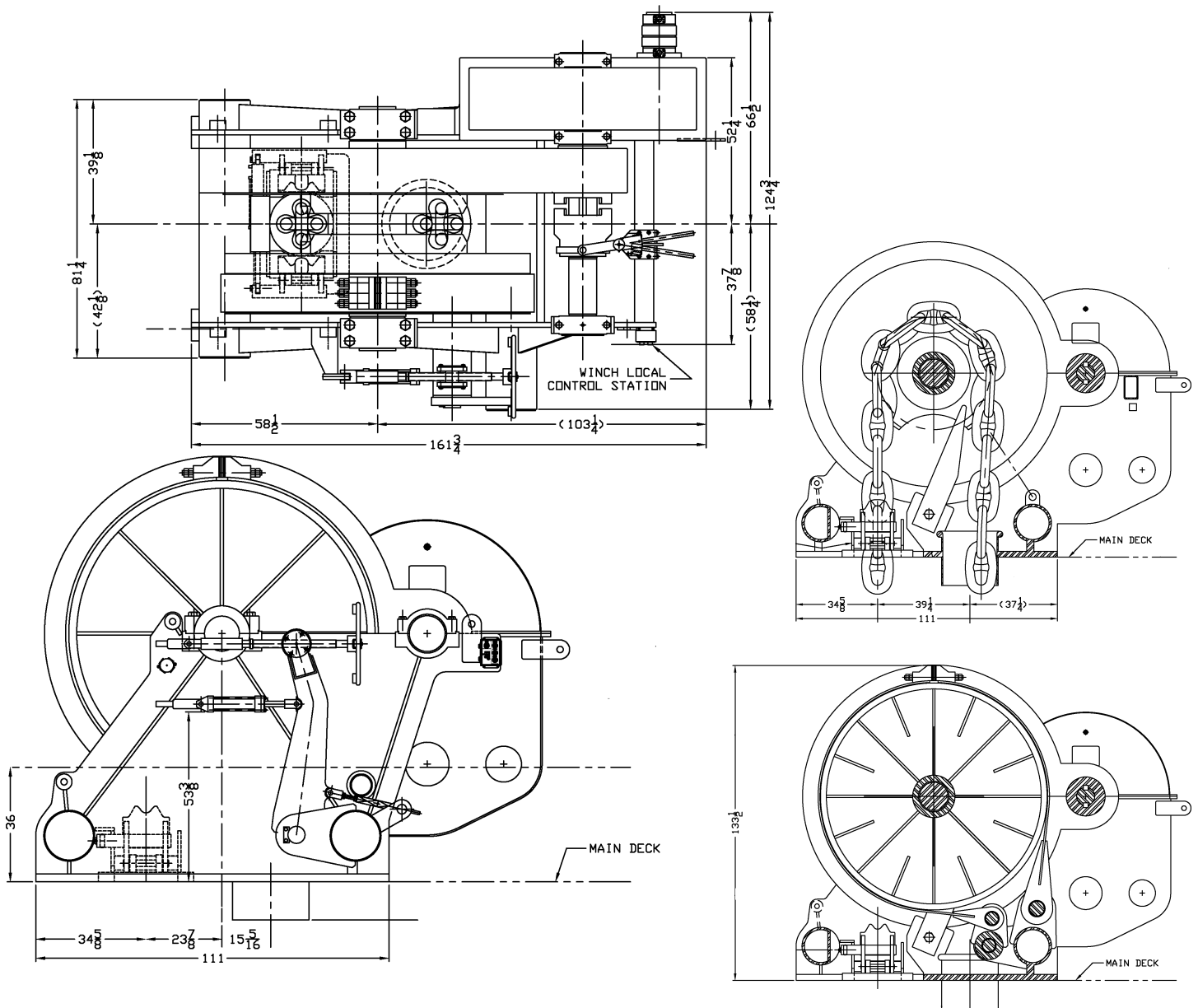
Markey Machinery Company, Inc.

4634 East Marginal Way South, Suite C-140, Seattle, WA 98134
Phone: (206) 622-4697 Toll Free (800) 637-3430 Fax: (206) 623-9839
Email: info@markeymachinery.com

Represented by:

Griffin & Associates - 355 Grow Avenue NW, Bainbridge Island, WA 98110 (USA) Phone: 206-780-0509 Email: bagriffin@griffinassociates.com
JH Menge & Company, Inc - 5825 Plauche Street, New Orleans, LA 70123 (USA) Phone: 504-733-4871 Email: fclatour@jhmenge.com

WYS-60 Anchor Windlass



Anchor Windlass System Options

- ◆ Models available for other chain sizes
- ◆ Right/Left-hand models, and Single/Multi-speed versions are available
- ◆ Single or dual wildcats, with or without warping heads
- ◆ Equipment certification by third party (DNV, ABS, Lloyd's) arranged
- ◆ A variety of power configurations can be accommodated
- ◆ Performance ratings can be tailored to suit specific applications

Markey's rugged anchor windlasses are built to the highest quality workboat standards using materials and processes providing maximum life and minimum maintenance in marine and outdoor applications.

MARKEY

Innovation you can depend on