



# WES-32

**Electric Anchor Windlass**

The WES-32 is an electric anchor windlass featuring double wildcat configuration and dual 24-inch warping heads. Rugged construction, high/low speed ranges, and low maintenance requirements make it suitable for a wide variety of chain handling applications. Electrical components meet all ABS, USCG, and IEEE-45 marine standards for safety and reliability.

### WINCH SYSTEM SPECIFICATIONS

- ◆ **Wildcat Specifications:** Dual five-pocket wildcat, for 2" (51mm) grade 3 stud-link anchor chain.
- ◆ **Rated Performance:** Wildcats: 53,000 lbs pull at 30 ft/min (low speed).  
Warping Heads: 60 ft/min (high-speed).
- ◆ **Electric Drive:** 60HP Two-speed Marine Duty motor with fail-safe brake.
- ◆ **Wildcat Braking:** 190,800 lbs, manual band-type friction brake with handwheel operator.
- ◆ **Wildcat Control:** Local pushbutton station for powered operations. Remote emergency stop.
- ◆ **Wildcat Dimensions:** 71.0" H x 174.0" W x 115.3" D      **Approximate Weight:** 32,000 lbs



## Markey Machinery Company, Inc.

4634 East Marginal Way South, Suite C-140, Seattle, WA 98134

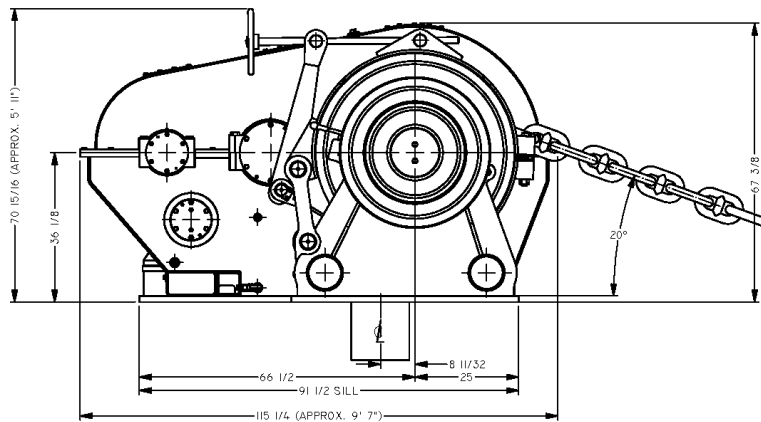
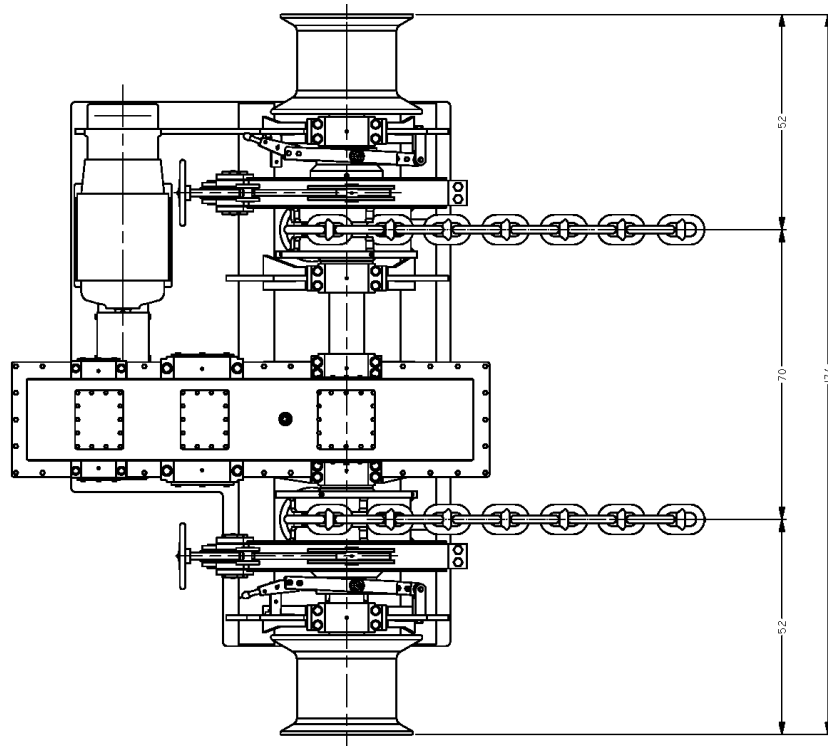
Phone: (206) 622-4697    Toll Free (800) 637-3430    Fax: (206) 623-9839

Email: [info@markeymachinery.com](mailto:info@markeymachinery.com)

*Represented by:*

Griffin & Associates - 355 Grow Avenue NW, Bainbridge Island, WA 98110 (USA) Phone: 206-780-0509 Email: [bagriffin@griffinassociates.com](mailto:bagriffin@griffinassociates.com)  
JH Menge & Company, Inc - 5825 Plauche Street, New Orleans, LA 70123 (USA) Phone: 504-733-4871 Email: [fclatour@jhmenge.com](mailto:fclatour@jhmenge.com)

# WES-32 Anchor Windlass



## Anchor Windlass System Options

- ◆ Models available for other chain sizes
- ◆ Right/Left-hand models, and Single/Multi-speed versions are available
- ◆ Single or dual wildcats, with or without warping heads
- ◆ Equipment certification by third party (DNV, ABS, Lloyd's) arranged
- ◆ A variety of power configurations can be accommodated
- ◆ Performance ratings can be tailored to suit specific applications

Markey's rugged anchor windlasses are built to the highest quality workboat standards using materials and processes providing maximum life and minimum maintenance in marine and outdoor applications.



*Innovation you can depend on*