



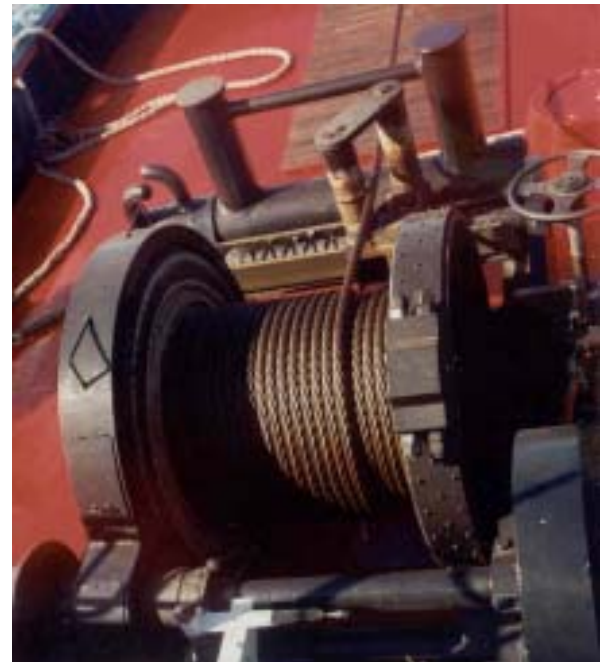
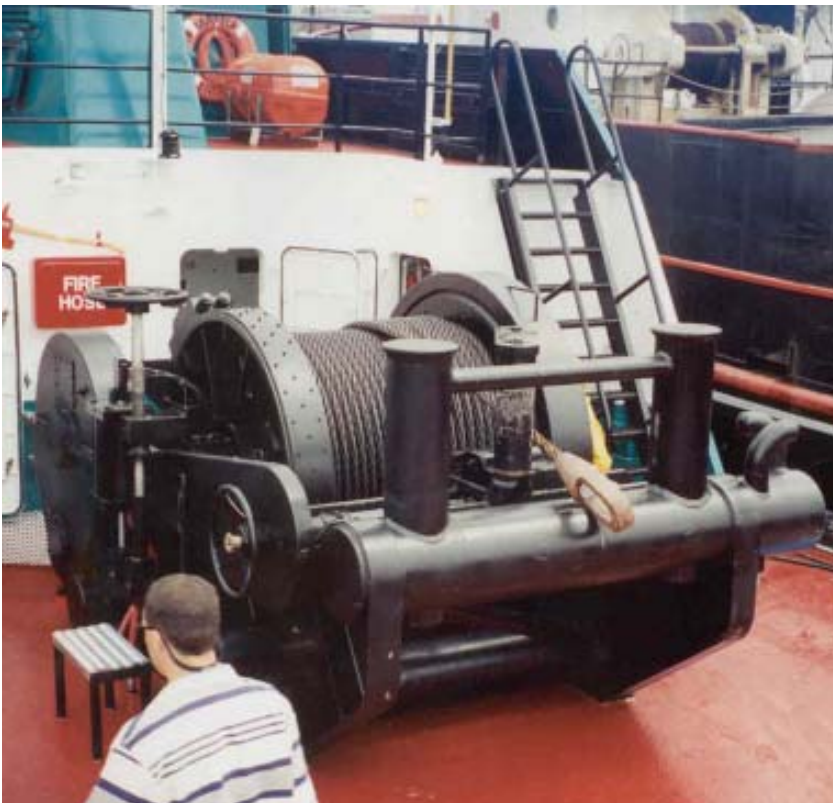
# TYS-32

## Hydraulic Towing Winch

The TYS-32 is a single-drum hydraulic towing winch with fairleader, featuring lightweight construction, a high-capacity pneumatic brake, and two speed ranges. Its rugged, reliable, low-maintenance design is well-suited for new/retrofit vessels and all towing applications.

### WINCH SYSTEM SPECIFICATIONS

- ◆ **Max. Drum Capacity:** 2,800 feet of 2.0" wire rope, in 11 layers.
- ◆ **Rated Performance:** 40,000 lbs line-pull at 40 ft/min, and 19,000 lbs line-pull at 80 ft/min (full drum).
- ◆ **Hydraulic Motor & Drive:** 2-speed vane motor with planetary and auto brake (200%).  
54 GPM flow at 2,650 PSI.
- ◆ **Winch Braking:** Pneumatic set/release. 350,000 lbs minimum holding capacity, w/ manual lockdown.
- ◆ **Winch Control:** Wheelhouse controls with on-deck emergency stop and freewheel pushbuttons.
- ◆ **Power Requirements:** Markey Hydraulic Power Unit, Gen-Set PTO pumps.
- ◆ **Approximate Weight:** 27,100 lbs
- ◆ **Winch Dimensions:** 83.0" H x 122.0" W x 152.0" D



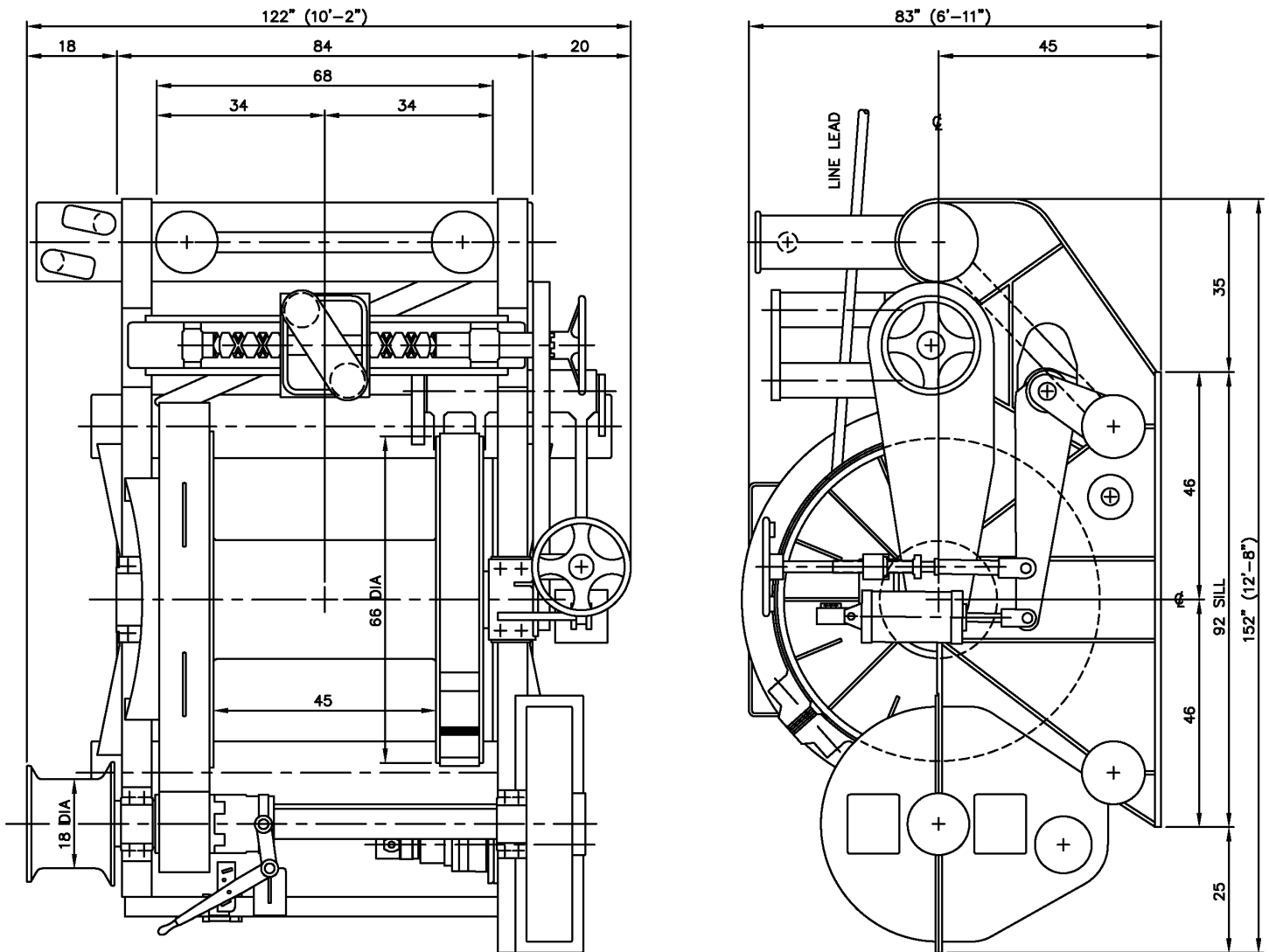
## Markey Machinery Company, Inc.

4634 East Marginal Way South, Suite C-140, Seattle, WA 98134  
Phone: (206) 622-4697 Toll Free (800) 637-3430 Fax: (206) 623-9839  
Email: [info@markeymachinery.com](mailto:info@markeymachinery.com)

*Represented by:*

Griffin & Associates - 355 Grow Avenue NW, Bainbridge Island, WA 98110 (USA) Phone: 206-780-0509 Email: [bagriffin@griffinassociates.com](mailto:bagriffin@griffinassociates.com)  
JH Menge & Company, Inc - 5825 Plauche Street, New Orleans, LA 70123 (USA) Phone: 504-733-4871 Email: [fclatour@jhmenge.com](mailto:fclatour@jhmenge.com)

# Markey TYS-32 Winch



## Towing Winch System Options

- ◆ Line Tension Display System available
- ◆ Models available with or without fairleader, and with or without warping head
- ◆ Proportional brake control available
- ◆ A variety of source power configurations can be accommodated
- ◆ Performance ratings can be tailored to suit specific applications

Markey's rugged towing winches are built to the highest quality workboat standards using materials and processes providing maximum life and minimum maintenance in marine and outdoor applications.



*Innovation you can depend on*