



TDSD-34

Diesel Towing Winch

The TDSD-34 is a reliable diesel-driven double-drum towing winch with high line-pull and braking capacity, designed specifically for offshore towing or anchor-handling applications. Ruggedly built to provide decades of high performance with low maintenance requirements, the TDSD-34 is a proven industry workhorse.

WINCH SYSTEM SPECIFICATIONS

- ◆ **Max. Drum Capacity:** Port Drum 2,850 feet of 2.25" wire, Starboard Drum up to 2,200 feet of 2" wire.
- ◆ **Rated Line-Pull:** Over 200,000 lbs rated pull (stall) at barrel layer, in first gear.
- ◆ **Diesel Power Unit:** Performance based on John Deere 6068TFM and Funk Series 2000 Transmission.
- ◆ **Winch Brakes:** Air-cylinder set and release, with manual handwheel provided for lock-down.
- ◆ **Winch Controls:** Pneumatic / Electric.
- ◆ **Winch Dimensions:** 92.0" H x 202.0" W x 169.0" D. **Approximate Weight:** 58,000 lbs.



Markey Machinery Company, Inc.

4634 East Marginal Way South, Suite C-140, Seattle, WA 98134

Phone: (206) 622-4697 Toll Free (800) 637-3430 Fax: (206) 623-9839

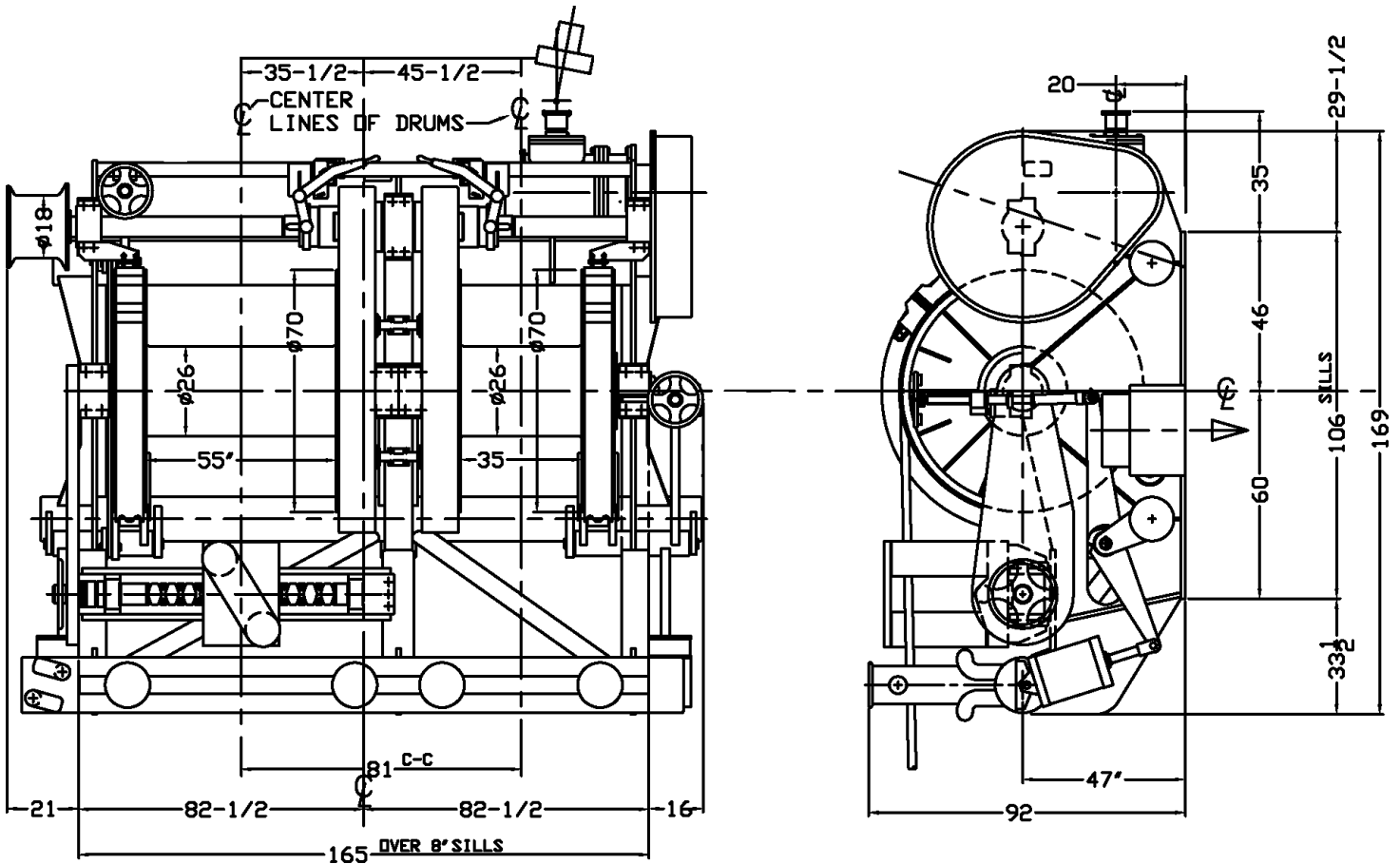
Email: info@markeymachinery.com

Represented by:

Griffin & Associates - 355 Grow Avenue NW, Bainbridge Island, WA 98110 (USA) Phone: 206-780-0509 Email: bagriffin@griffinassociates.com

JH Menge & Company, Inc - 5825 Plauche Street, New Orleans, LA 70123 (USA) Phone: 504-733-4871 Email: fclatour@jhmenge.com

Markey TDSD-34 Towing Winch



Towing Winch System Options

- ◆ Single & Double Drum configurations available
- ◆ Dual fairleads available
- ◆ Winch can be designed for chain-drive from Diesel Power Unit located below-deck or in the fidley
- ◆ Winch can be designed for shaft-drive from Diesel Power Unit located in the fidley
- ◆ Drum sizes can be changed to accomodate various rope capacity requirements
- ◆ Auxiliary drum available to replace warping head
- ◆ Diesel, hydraulic & electric drives available
- ◆ Performance ratings can be tailored to suit specific applications
- ◆ 2nd and 3rd-station winch controls available
- ◆ Marine-duty epoxy paint system

Markey's rugged towing winches are built to the highest quality workboat standards using materials and processes providing maximum life and minimum maintenance in marine and outdoor applications.



Innovation you can depend on