



TDSD-32WF

Diesel "Waterfall" Towing Winch

The TDSD-32WF is a reliable diesel-driven double-drum towing winch featuring a compact "waterfall" drum configuration. High line-pull and braking power makes it perfect for offshore towing or anchor-handling applications. Ruggedly built for low maintenance requirements and to provide decades of high performance, the Markey TDSD-32WF is one tough winch.

WINCH SYSTEM SPECIFICATIONS

- ◆ **Max. Drum Capacity:** 2,350 feet of 2.0" wire-rope on each drum.
- ◆ **Rated Line-Pull:** 200,000 lbs rated pull (stall) at barrel layer, in first gear.
- ◆ **Diesel Power Unit:** Performance based on John Deere 6068TFM (158HP), Funk Series 2000 Transmission
- ◆ **Winch Brakes:** Air-cylinder set and release (maximum 241,000 lbs), with handwheel for lock-down.
- ◆ **Winch Controls:** Pneumatic / Electric
- ◆ **Winch Dimensions:** 115.0" H x 141.0" W x 188.0" D **Approximate Weight:** 48,000 lbs



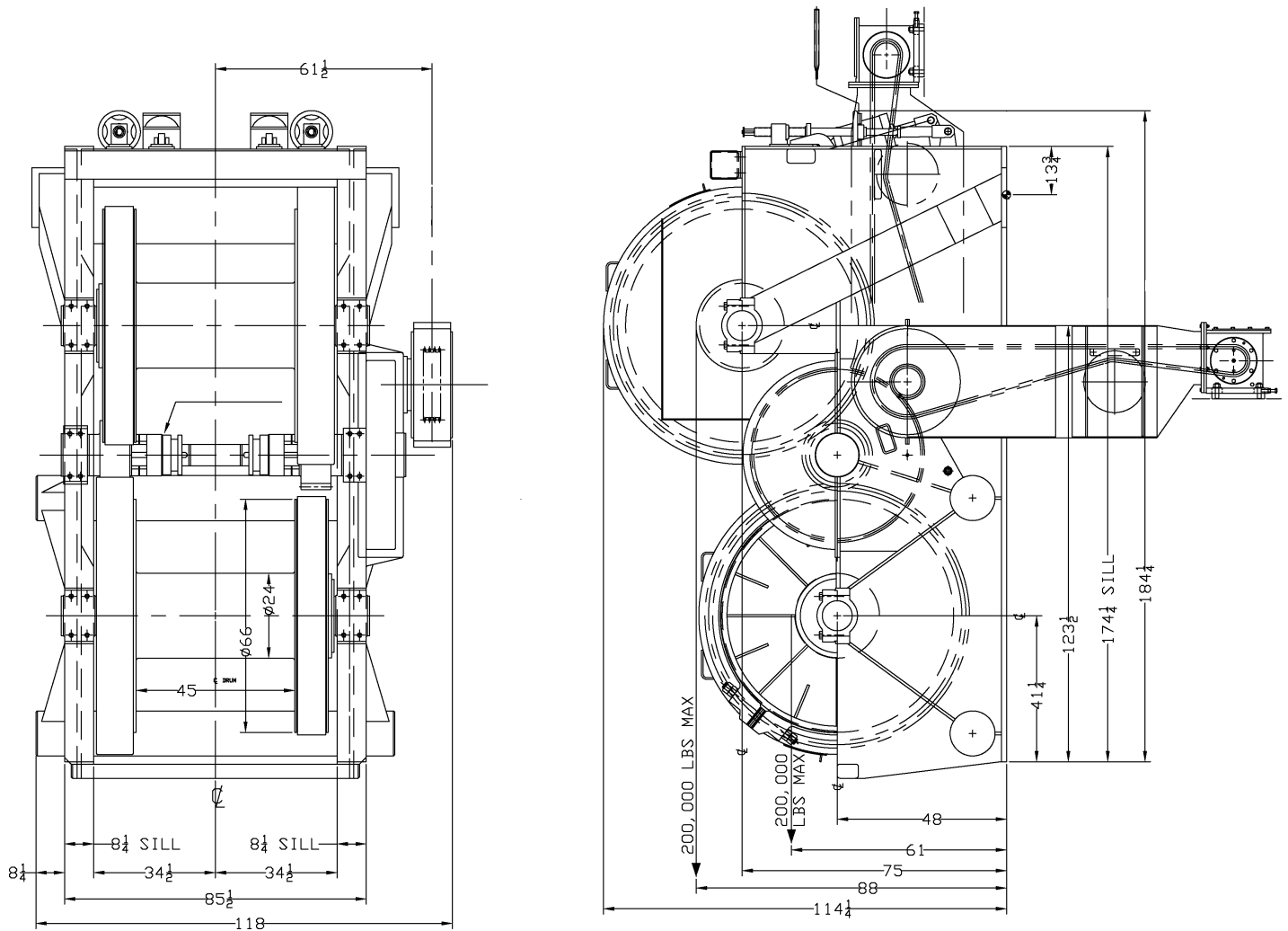
Markey Machinery Company, Inc.

4634 East Marginal Way South, Suite C-140, Seattle, WA 98134
Phone: (206) 622-4697 Toll Free (800) 637-3430 Fax: (206) 623-9839
Email: info@markeymachinery.com

Represented by:

Griffin & Associates - 355 Grow Avenue NW, Bainbridge Island, WA 98110 (USA) Phone: 206-780-0509 Email: bagriffin@griffinassociates.com
JH Menge & Company, Inc - 5825 Plauche Street, New Orleans, LA 70123 (USA) Phone: 504-733-4871 Email: fclatour@jhmenge.com

TDSD-32WF Towing Winch



Towing Winch System Options

- ◆ Single & Double Drum configurations available
- ◆ Dual fairleads available
- ◆ Winch can be designed for chain-drive from Diesel Power Unit located below-deck or in the fidley
- ◆ Winch can be designed for shaft-drive from Diesel Power Unit located in the fidley
- ◆ Drum sizes can be changed to accomodate various rope capacity requirements
- ◆ Auxiliary drum available to replace warping head
- ◆ Diesel, hydraulic & electric drives available
- ◆ Performance ratings can be tailored to suit specific applications
- ◆ 2nd and 3rd-station winch controls available
- ◆ Marine-duty epoxy paint system

Markey's rugged towing winches are built to the highest quality workboat standards using materials and processes providing maximum life and minimum maintenance in marine and outdoor applications.



Innovation you can depend on