



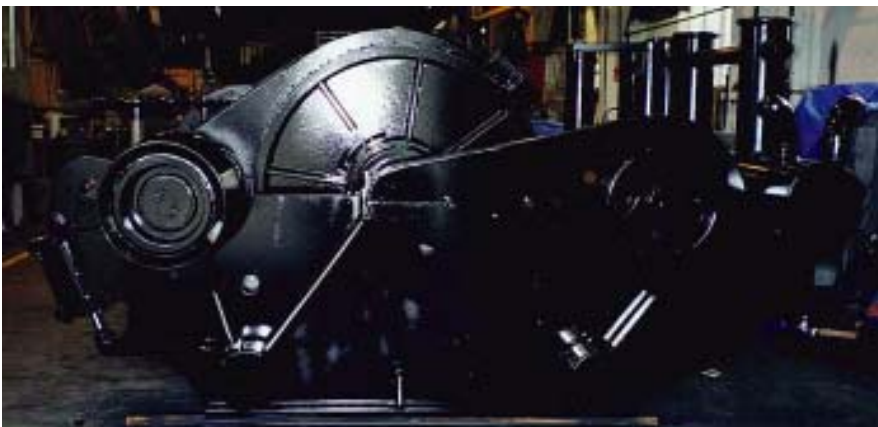
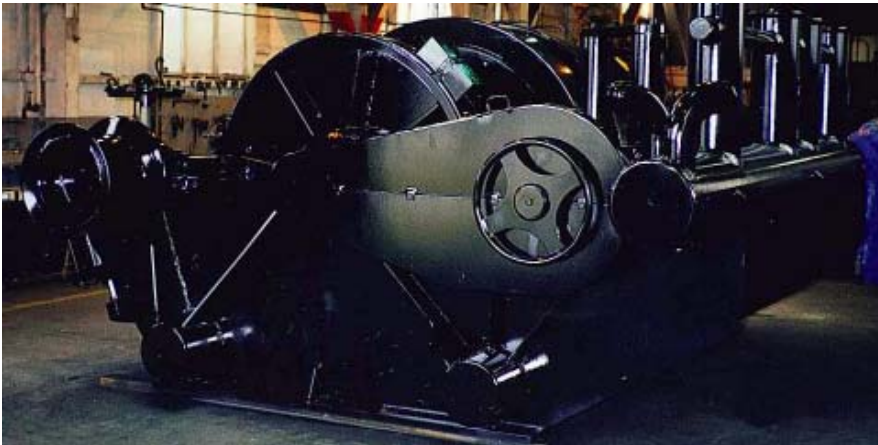
TDSD-24

Diesel Towing Winch

The TDSD-24 is a reliable diesel-driven double-drum towing winch with high line-pull and braking capacity, designed specifically for offshore towing or anchor-handling applications. Ruggedly built to provide decades of high performance with low maintenance requirements, the TDSD-24 is a proven industry workhorse suitable for newbuilds or retrofit projects.

WINCH SYSTEM SPECIFICATIONS

- ◆ **Max. Drum Capacity:** 2,300 feet (port-side) and 1,600 feet (starboard-side) of 1.5" wire rope.
- ◆ **Rated Line-Pull:** Up to 137,000 lbs rated pull (stall) at barrel layer, with line speeds up to 96 ft/min.
- ◆ **Diesel Power Unit:** Performance based on GM 3-71 diesel and Funk Series Transmission.
- ◆ **Winch Brakes:** 250,000 lbs holding power (150 PSI air), with manual handwheel for lock-down.
- ◆ **Winch Controls:** Pneumatic / Manual.
- ◆ **Winch Dimensions:** 73.0" H x 176.7" W x 142.5" D. **Approximate Weight:** 37,000 lbs.



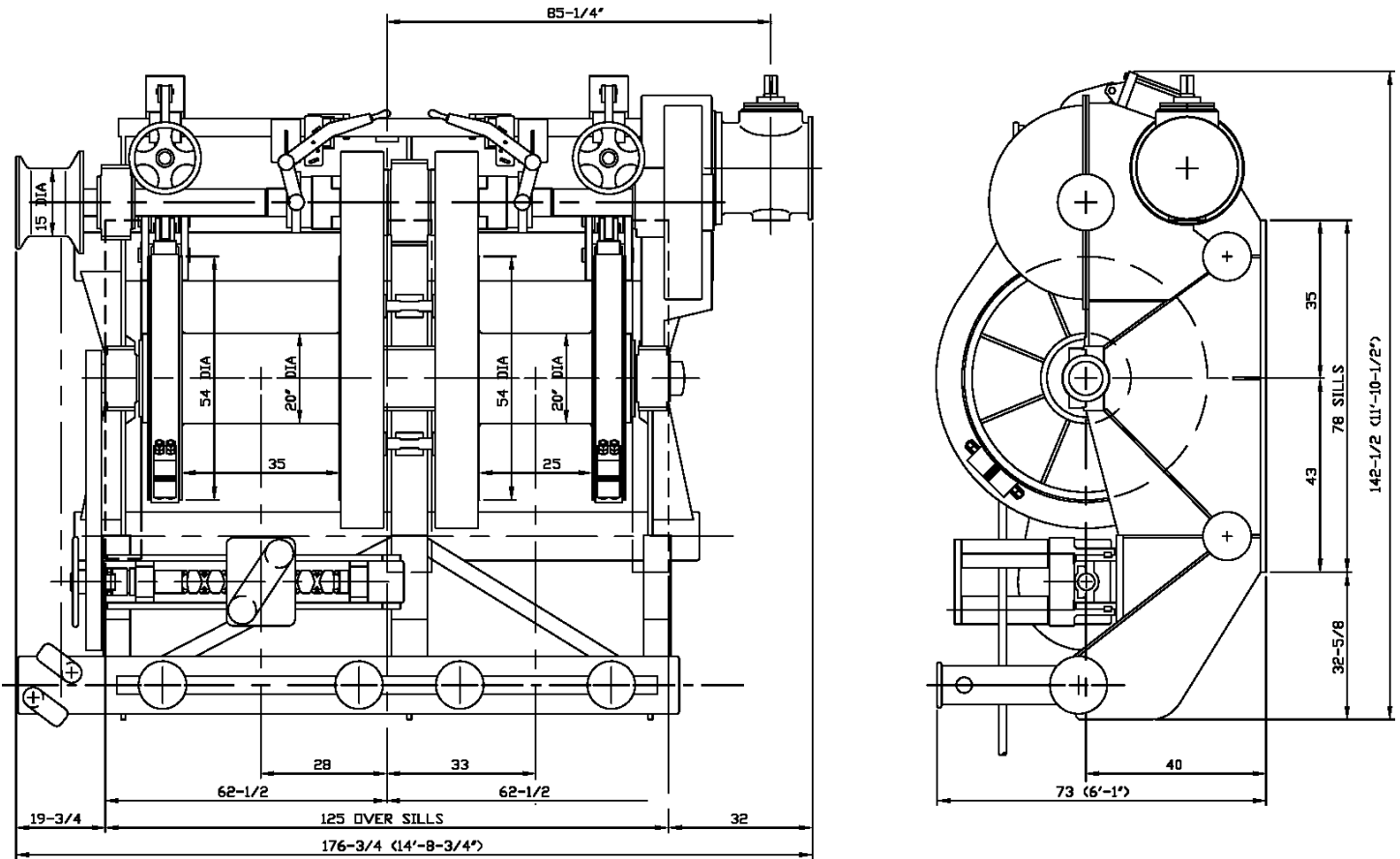
Markey Machinery Company, Inc.

4634 East Marginal Way South, Suite C-140, Seattle, WA 98134
Phone: (206) 622-4697 Toll Free (800) 637-3430 Fax: (206) 623-9839
Email: info@markeymachinery.com

Represented by:

Griffin & Associates - 355 Grow Avenue NW, Bainbridge Island, WA 98110 (USA) Phone: 206-780-0509 Email: bagriffin@griffinassociates.com
JH Menge & Company, Inc - 5825 Plauche Street, New Orleans, LA 70123 (USA) Phone: 504-733-4871 Email: fclatour@jhmenge.com

Markey TDSD-24 Towing Winch



Towing Winch System Options

- ◆ Single & Double Drum configurations available
- ◆ Dual fairleads available
- ◆ Winch can be designed for chain-drive from Diesel Power Unit located below-deck or in the fidley
- ◆ Winch can be designed for shaft-drive from Diesel Power Unit located in the fidley
- ◆ Drum sizes can be changed to accomodate wire rope capacity requirements
- ◆ Auxiliary drum available to replace warping head
- ◆ Diesel, hydraulic & electric drives available
- ◆ Performance ratings can be tailored to suit specific applications
- ◆ 2nd and 3rd-station winch controls available
- ◆ Marine-duty epoxy paint system

Markey's rugged towing winches are built to the highest quality workboat standards using materials and processes providing maximum life and minimum maintenance in marine and outdoor applications.



Innovation you can depend on