



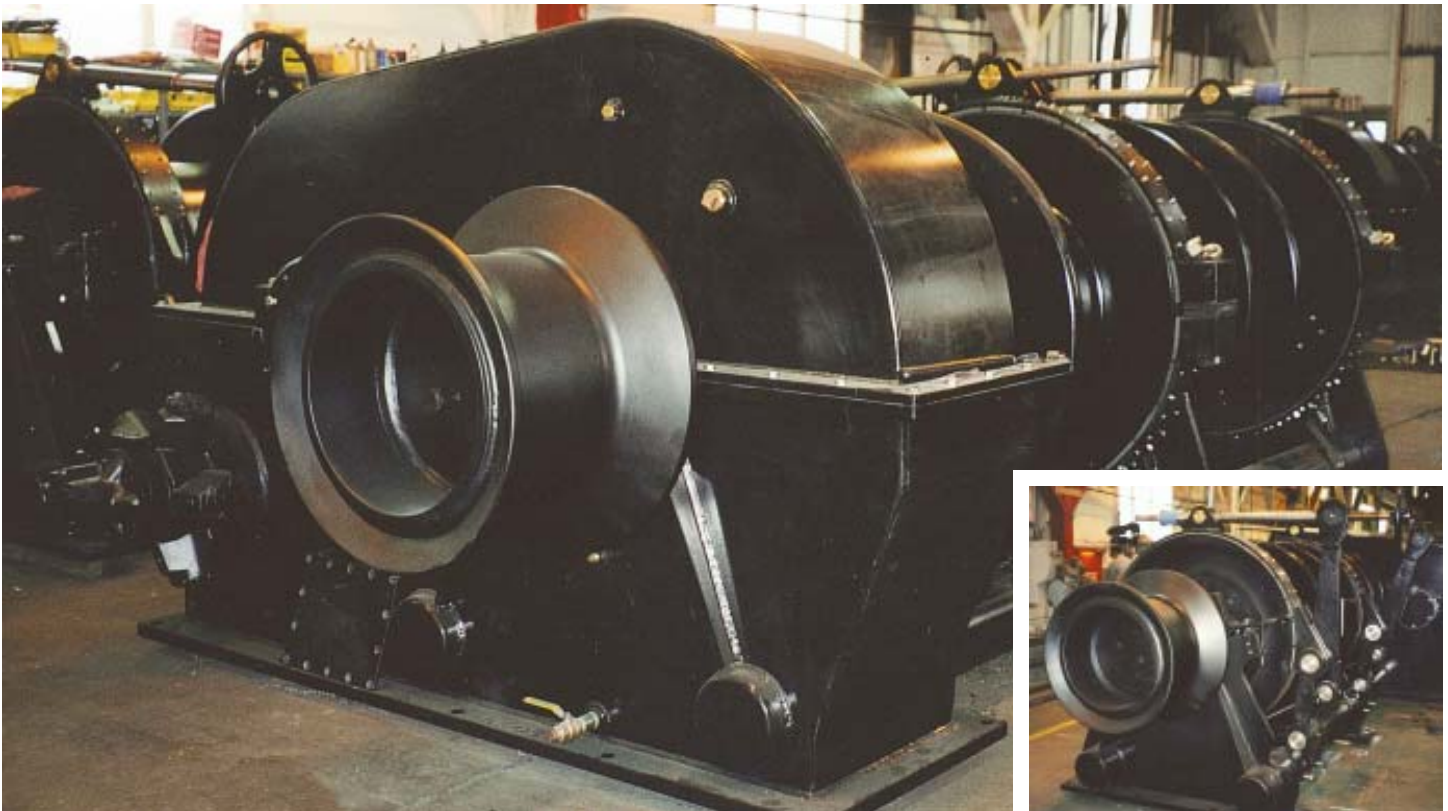
DYSMW- 22-37

Hydraulic Winch/Windlass

The versatile DYSMW-22-37 is a combination Mooring Winch / Anchor-Windlass designed to be an effective solution for the general operating requirements of line and chain handling. Featuring dual warping heads plus a 5-pocket wildcat and plenty of reserve power, the DYSM-22-37 is a high-performance workhorse built tough to provide decades of service.

WINCH SYSTEM SPECIFICATIONS

- ◆ **Max. Drum Capacity:** (Storage) 1,000 feet of 1.375" line. (Working) 10 wraps on one layer.
- ◆ **Winch Performance:** 51,100 lbs line-pull at 33 ft/min (Low speed), 17,000 lbs at 100 ft/min (High speed).
- ◆ **Wildcat Performance:** 5-pocket wildcat sized for 2-5/16" S.L. chain. 53,300 lbs line-pull at 31 ft/min.
- ◆ **Hydraulic Motor & Drive:** Two-speed radial-piston motor requiring 45 GPM @ 2800 PSI.
- ◆ **Winch Braking:** Stainless steel brake drum, manual set with calibrated slip (OCIMF-Compliant).
- ◆ **Winch Control:** Lever operators for inhaul/payout and slow/fast speed selection.
- ◆ **Winch Dimensions:** 71.6" H x 178.6" W x 100.5" D. **Approximate Weight:** 33,000 lbs.



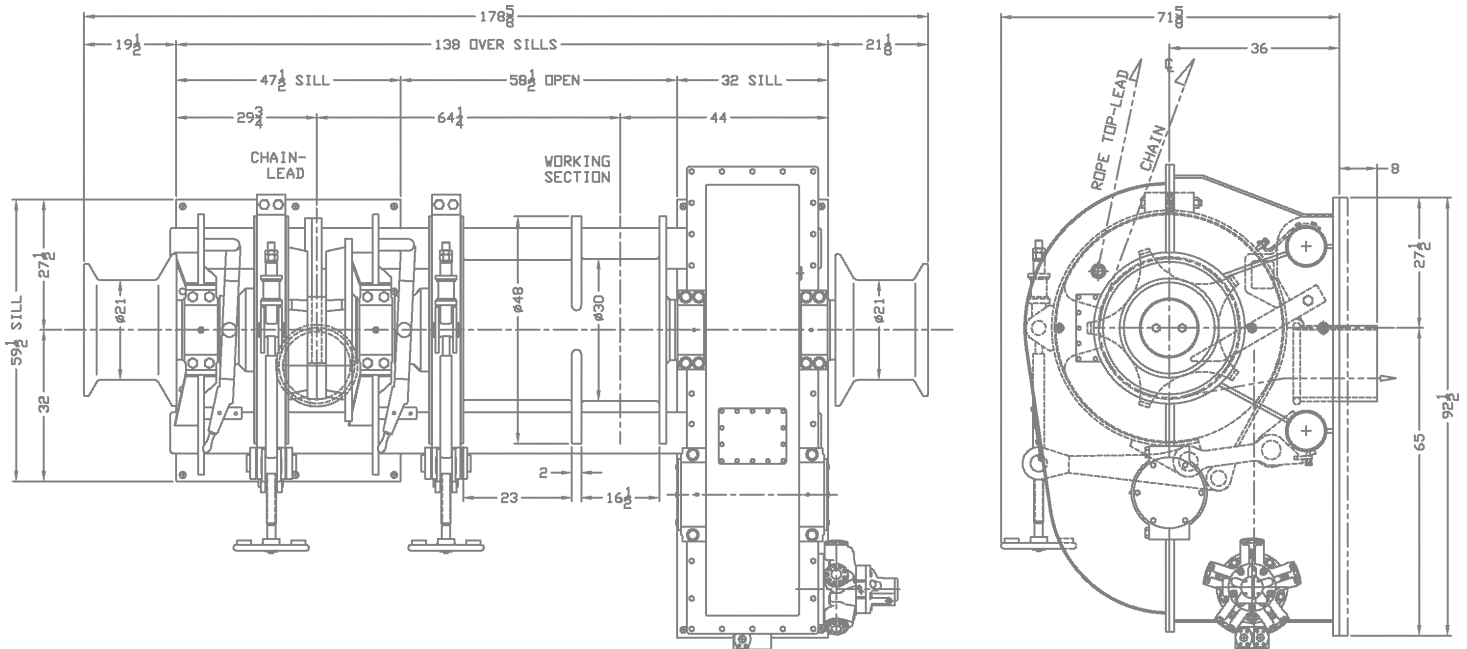
Markey Machinery Company, Inc.

4634 East Marginal Way South, Suite C-140, Seattle, WA 98134
Phone: (206) 622-4697 Toll Free (800) 637-3430 Fax: (206) 623-9839
Email: info@markeymachinery.com

Represented by:

Griffin & Associates - 355 Grow Avenue NW, Bainbridge Island, WA 98110 (USA) Phone: 206-780-0509 Email: bagriffin@griffinassociates.com
JH Menge & Company, Inc - 5825 Plauche Street, New Orleans, LA 70123 (USA) Phone: 504-733-4871 Email: fclatour@jhmenge.com

Markey DYSMW-22-37 Winch



Combination Winch/Windlass System Options

- ◆ Automatic constant-tension line controls with Tension Display System
- ◆ Models available for other chain and line sizes
- ◆ Brake calibration field kit available
- ◆ Single or dual wildcats, with or without warping head
- ◆ Proportional brake control available
- ◆ A variety of source power configurations can be accommodated
- ◆ Equipment certification by third party (DNV, ABS, Lloyds) can be arranged
- ◆ Performance ratings can be tailored to suit specific applications

Markey's rugged winches are built to the highest quality workboat standards using materials and processes providing maximum life and minimum maintenance in marine and outdoor applications.



Innovation you can depend on