



DYSF-42

Underlead-Version

The DYSF-42UL is a single-drum hydraulic hawser winch with custom "underlead" fairlead, automatic render/recover mode, high braking capacity, and two speed ranges for escort and ship-assist tugs. Its simple, low-maintenance design delivers reliability and long service life.

WINCH SYSTEM SPECIFICATIONS

- ◆ **Max. Drum Capacity:** Over 500 feet of 8.0" circumference synthetic line.
- ◆ **Rated Performance:** Two speed ranges: 18,000 lbs line-pull at 70 ft/min and 5,750 lbs line-pull at 230 ft/min
- ◆ **Hydraulic Motor & Drive:** High-displacement radial-piston motor with freewheel capability.
Gen-set driven hydraulic pumps, 70HP (98 GPM / 2800 PSI).
- ◆ **Winch Braking:** Band-type brake, air set/released, 200,000 lbs minimum holding capacity.
- ◆ **Winch Control:** Wheelhouse controls with on-deck emergency stop and freewheel pushbuttons.
- ◆ **Power Requirements:** 70HP Generator-set front-end PTO to drive hydraulic pump(s), or optional Electro-Hydraulic Power Unit.
- ◆ **Winch Dimensions:** 69.3" H x 102" W x 102" D. Approximate weight is 14,000 lbs.



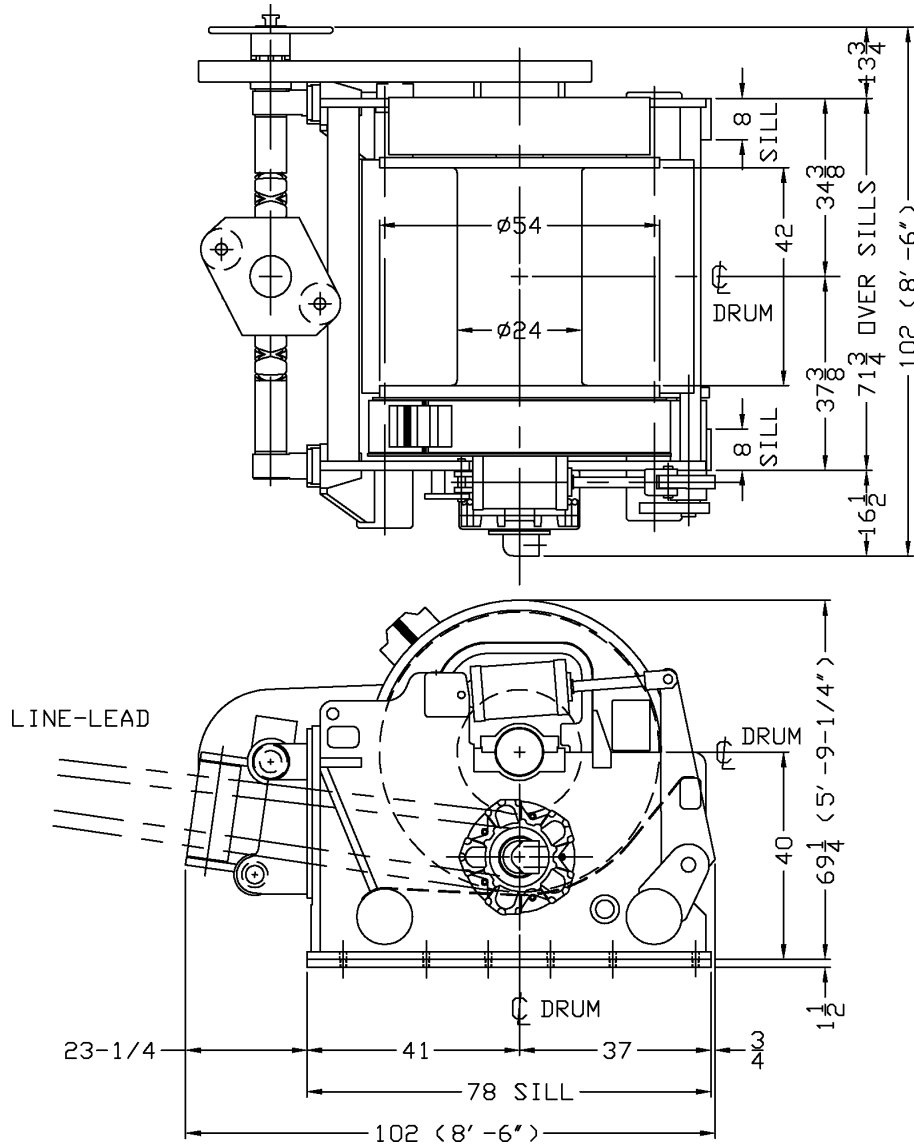
Markey Machinery Company, Inc.

4634 East Marginal Way South, Suite C-140, Seattle, WA 98134
Phone: (206) 622-4697 Toll Free (800) 637-3430 Fax: (206) 623-9839
Email: info@markeymachinery.com

Represented by:

Griffin & Associates - 355 Grow Avenue NW, Bainbridge Island, WA 98110 (USA) Phone: 206-780-0509 Email: bagriffin@griffinassociates.com
JH Menge & Company, Inc - 5825 Plauche Street, New Orleans, LA 70123 (USA) Phone: 504-733-4871 Email: fclatour@jhmenge.com

Markey DYSF-42UL Winch



Hawser Winch System Options

- ◆ Digital/Analog Line Tension Display System
- ◆ Multiple-station winch controls
- ◆ AC Variable frequency power systems and winch-drives available
- ◆ Models available with or without fairleader, and with or without warping head
- ◆ Proportional brake control available
- ◆ A variety of source power configurations can be accommodated
- ◆ Electrical hooks in system box for ship's UPS
- ◆ Performance ratings can be tailored to suit specific applications

Markey's rugged hawser winches are built to the highest quality workboat standards using materials and processes providing maximum life and minimum maintenance in marine and outdoor applications.



Innovation you can depend on