



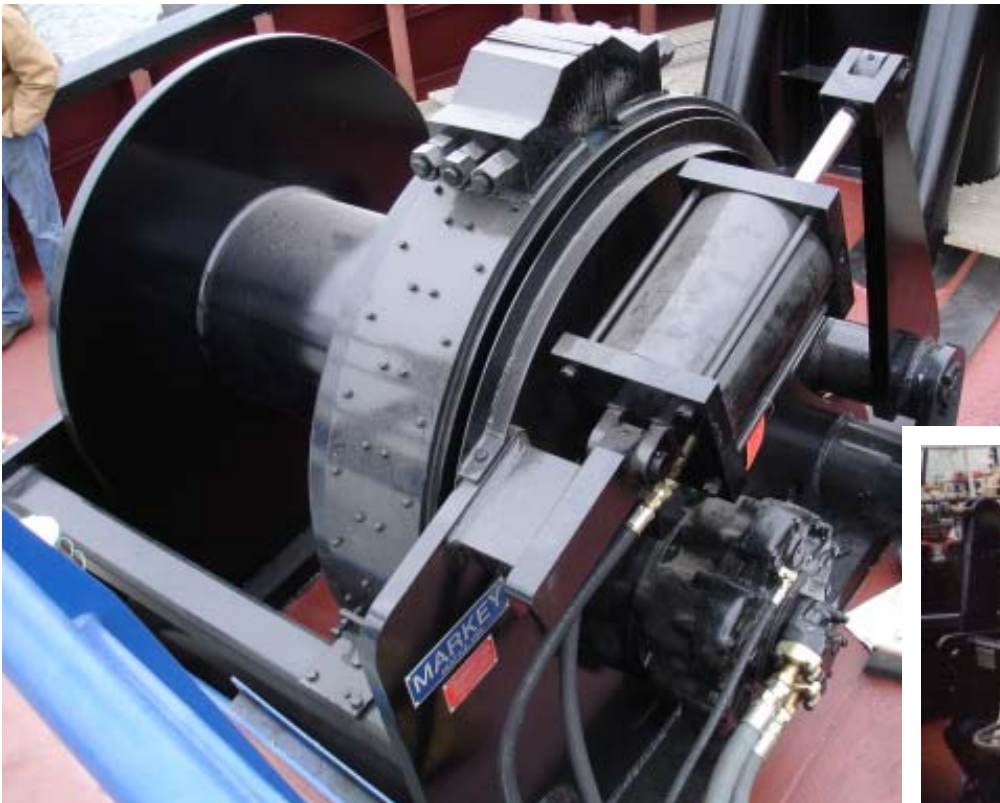
DYS-42

Hydraulic Hawser Winch

The DYS-42 is a single-drum hydraulic bow hawser winch featuring direct-drive power, a high-capacity air-actuated drum brake, and Markey's proven automatic render-recover mode. Its reliable, low-maintenance design is well-suited for escort and ship-assist vessels and the DYS-42 is an ideal choice for the retrofit or replacement of existing winches.

WINCH SYSTEM SPECIFICATIONS

- ◆ **Max. Drum Capacity:** 400 feet of 8.0" circumference synthetic line, plus 50 feet of 8.0" pennant.
- ◆ **Rated Performance:** 22,700 lbs line-pull (stall), 18,500 lbs at 130 ft/min (Manual or Render-Recover modes)
- ◆ **Hydraulic Motor & Drive:** High-displacement radial-piston motor requiring 64 GPM / 2500 PSI.
- ◆ **Winch Braking:** Automatic air-actuated drum brake, 400,000 lbs holding capacity at the second layer.
- ◆ **Winch Control:** Wheelhouse controls with on-deck emergency stop and freewheel pushbuttons.
- ◆ **Power Requirements:** Dedicated 100HP Hydraulic Power Unit, or Header-System.
- ◆ **Winch Dimensions:** 78.4" H x 74.7" W x 81.5" D. **Approximate Weight:** 14,600 lbs.



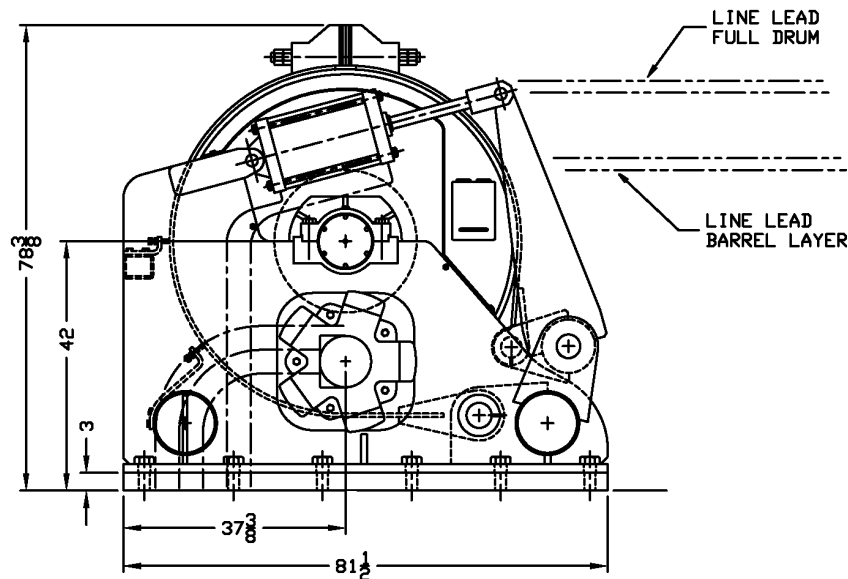
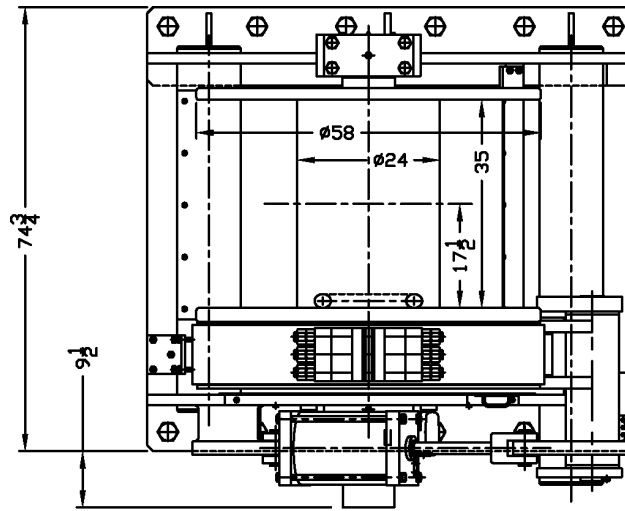
Markey Machinery Company, Inc.

4634 East Marginal Way South, Suite C-140, Seattle, WA 98134
Phone: (206) 622-4697 Toll Free (800) 637-3430 Fax: (206) 623-9839
Email: info@markeymachinery.com

Represented by:

Griffin & Associates - 355 Grow Avenue NW, Bainbridge Island, WA 98110 (USA) Phone: 206-780-0509 Email: bagriffin@griffinassociates.com
JH Menge & Company, Inc - 5825 Plauche Street, New Orleans, LA 70123 (USA) Phone: 504-733-4871 Email: fclatour@jhmenge.com

Markey DYS-42 Winch



Hawser Winch System Options

- ◆ Digital/Analog Line Tension Display System
- ◆ Multiple-station winch controls
- ◆ AC Variable frequency power systems and winch-drives available
- ◆ Models available with fairleader, and with or without warping head
- ◆ Proportional brake control available
- ◆ A variety of source power configurations can be accommodated
- ◆ Electrical hooks in system box for ship's UPS
- ◆ Performance ratings can be tailored to suit specific applications

Markey's rugged hawser winches are built to the highest quality workboat standards using materials and processes providing maximum life and minimum maintenance in marine and outdoor applications.



Innovation you can depend on