



# DUTW-9-11

## Hydraulic Traction Winch and DUSR-9-11 Storage Winches

The DUTW-9-11 is an integrated hydraulic-powered cable handling system that includes a traction winch, storage winches, and multiple control stations. Designed for deep sea coring, sampling, trawling, and dredging, the system features a compact layout, overhung traction sheaves, plus storage winches with removable drums and adjustable spooling tension.

### WINCH SYSTEM SPECIFICATIONS

- ◆ **Max. Drum Capacity:** 45,000 ft of 9/16" wire rope; 30,000 ft of 0.68" EM cable or 0.681" fiber optic cable.
- ◆ **Rated Performance:** 30,000 lbs maximum line-pull at 100 ft/min. Maximum line-speed is 300 ft/min.
- ◆ **Hydraulic Motor & Drive:** 150HP Electro-Hydraulic Power Unit, 460/3/60VAC.
- ◆ **Winch Control:** Local and remote control consoles with line tension, speed, and scope display.
- ◆ **Power Requirements:** Traction Winch 106 GPM @ 2,600 PSI, Storage Winch 43 GPM @ 2,900 PSI.
- ◆ **Approximate Weight:** DUTW-9-11 @ 11,600 lbs. DUSR-9-11 @ 17,100 lbs.
- ◆ **Winch Dimensions:** DUTW-9-11: 67.8"H x 115" W x 76.5"D. DUSR-9-11 87.3"H x 167.3" W x 180" D.



## Markey Machinery Company, Inc.

4634 East Marginal Way South, Suite C-140, Seattle, WA 98134

Phone: (206) 622-4697 Toll Free (800) 637-3430 Fax: (206) 623-9839

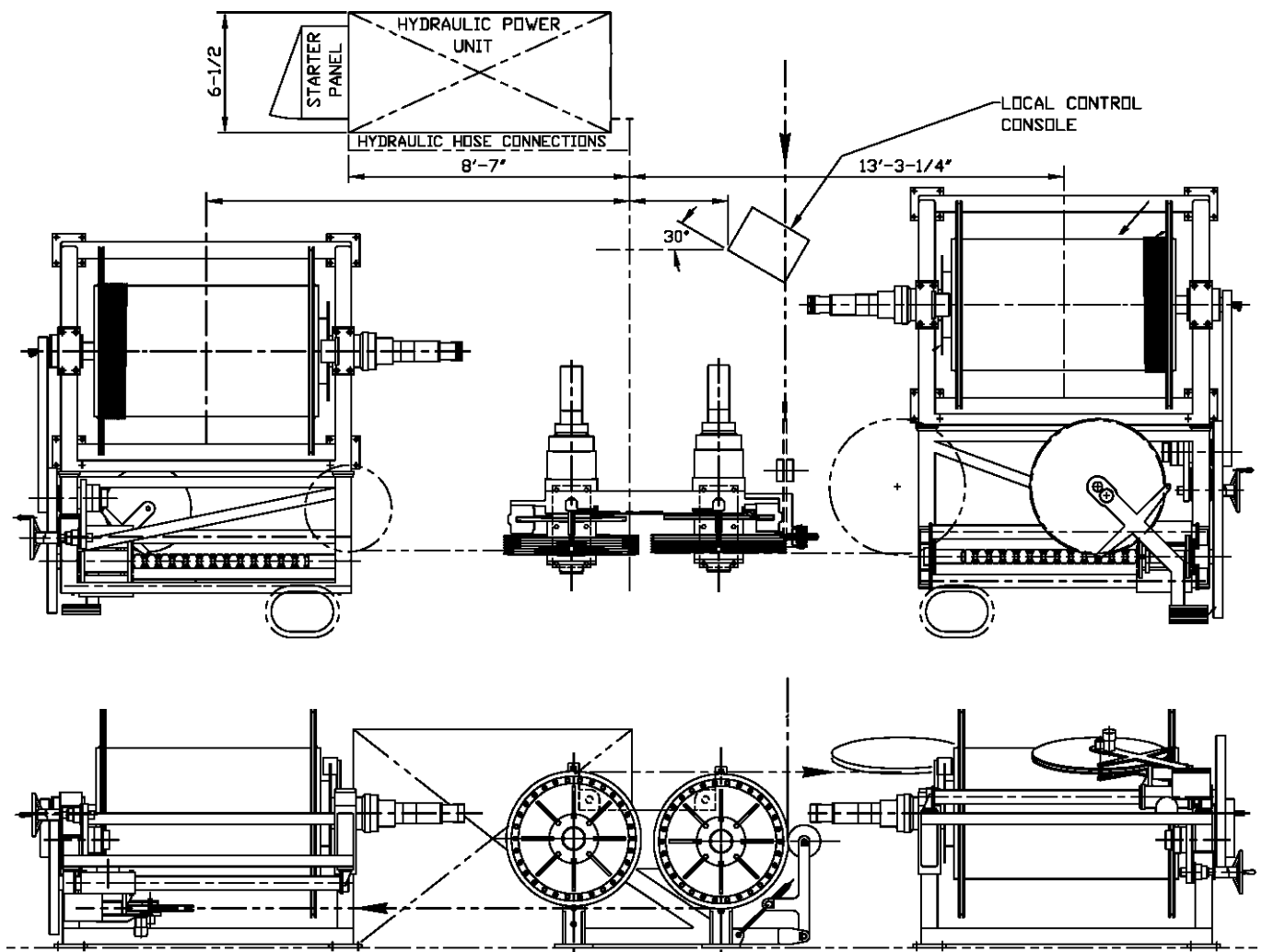
Email: [info@markeymachinery.com](mailto:info@markeymachinery.com)

*Represented by:*

Griffin & Associates - 355 Grow Avenue NW, Bainbridge Island, WA 98110 (USA) Phone: 206-780-0509 Email: [bagriffin@griffinassociates.com](mailto:bagriffin@griffinassociates.com)  
JH Menge & Company, Inc - 5825 Plauche Street, New Orleans, LA 70123 (USA) Phone: 504-733-4871 Email: [fclatour@jhmenge.com](mailto:fclatour@jhmenge.com)

# DUTW-9-11 Traction Winch

# DUSR-9-11 Storage Winch



## Traction Winch System Options

- ◆ Digital/Analog Line Tension Display System
- ◆ Multiple-station winch controls
- ◆ AC Variable frequency power systems and winch-drives available
- ◆ Markey can provide cable, wire rope, factory spooling, and slip ring assemblies
- ◆ A variety of source power configurations can be accommodated
- ◆ A variety of automatic control functions are available
- ◆ Performance ratings can be tailored to suit specific applications

Markey's rugged winches are built to the highest quality standards using materials and processes providing maximum life and minimum maintenance in marine and outdoor applications.

**MARKEY**

*Innovation you can depend on*