



DUS-32

Hydraulic Pontoon Winch

The DUS-32 is a single-drum hydraulic pontoon winch developed for moving the draw span section of the US Navy's Admiral Clary bridge at Ford Island, Hawaii. These winches are used to pull a 950' pontoon section under an elevated transition span whenever the Navy needs to open the navigation channel for warships. DUS-32's provide reliable, trouble-free performance under operating requirements unique to one of five floating bridges in the world.

WINCH SYSTEM SPECIFICATIONS

- ◆ **Max. Drum Capacity:** 1,100 feet of 2.0" wire rope, in three layers (with one spare layer).
- ◆ **Rated Performance:** Up to 48,700 lbs line-pull at barrel layer, with line speeds from "creep" to 73 ft/min.
- ◆ **Hydraulic Motor & Drive:** Slow speed radial-piston motor requiring 117 GPM / 1975 PSI.
- ◆ **Power Requirements:** Dedicated 200HP Hydraulic Power Unit or header system.
- ◆ **Winch Braking:** Fully enclosed spring-set disc brakes, 15,000 lbs holding capacity at barrel layer.
- ◆ **Winch Dimensions:** 95.6" H x 119.6" W x 164.5" D. **Approximate Weight:** 60,000 lbs.



Markey Machinery Company, Inc.

4634 East Marginal Way South, Suite C-140, Seattle, WA 98134

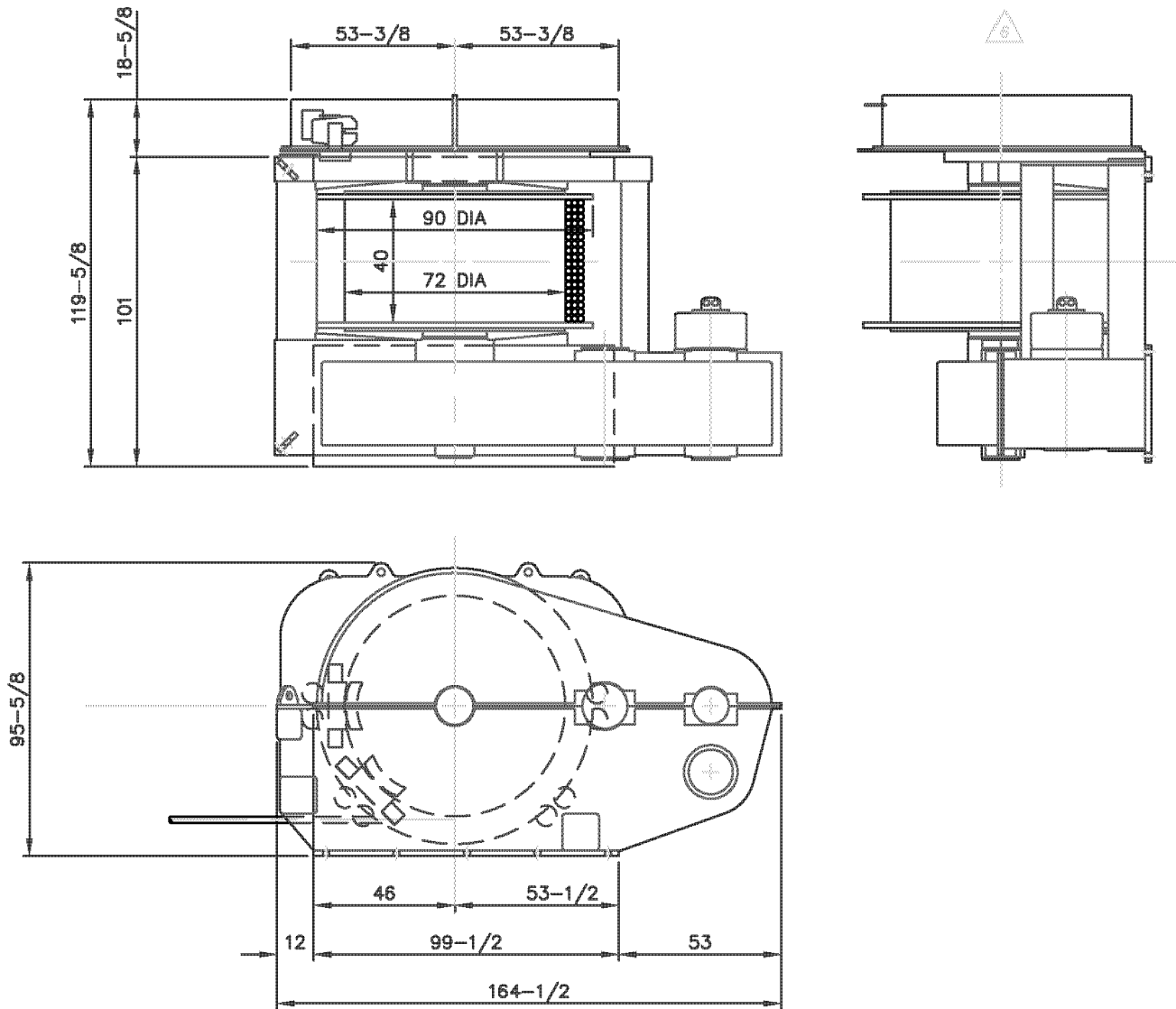
Phone: (206) 622-4697 Toll Free (800) 637-3430 Fax: (206) 623-9839

Email: info@markeymachinery.com

Represented by:

Griffin & Associates - 355 Grow Avenue NW, Bainbridge Island, WA 98110 (USA) Phone: 206-780-0509 Email: bagriffin@griffinassociates.com
JH Menge & Company, Inc - 5825 Plauche Street, New Orleans, LA 70123 (USA) Phone: 504-733-4871 Email: fclatour@jhmenge.com

Markey DUS-32 Winch



Pontoon Winch System Options

- ◆ Single and multiple-station winch controls available
- ◆ Electric versions available
- ◆ A variety of source power configurations can be accommodated
- ◆ Performance ratings can be tailored to suit specific applications
- ◆ Ask about custom designs for specific applications
- ◆ Electric-Hydraulic Power Units available

Every Markey winch is built to the highest quality standards using premium materials and detailed processes that ensure maximum life and minimum maintenance in marine and outdoor applications.



Innovation you can depend on