



CEWP-90

Electric Towing Capstan

The CEWP-90 Electric Towing Capstan is a heavy-duty line-handling unit with a 300,000 lb. bitt-rating. The 40HP single-speed capstan features a reversing electric drive and local pushbutton controls. Electrical components meet ABS, USCG, and IEEE-45 Marine Rules.

CAPSTAN SYSTEM SPECIFICATIONS

- ◆ **Max. Line Pull:** 60,000 lbs (stall), 25,000 lbs @ 36 ft/min.
- ◆ **Barrel Dimensions:** 27" dia. x 32" high (working surface). 37" high with extended barrel option.
- ◆ **Electric Motor & Drive:** 40 HP marine-rated motor with space heater.
- ◆ **Braking Capacity:** Spring-set marine-duty brake rated at 150% of motor torque.
- ◆ **Power Control:** 3-pushbutton NEMA-4X control station (Forward, Stop, Reverse).
- ◆ **Power Requirements:** 460VAC 3 Phase, 60Hz. Other source voltage options available.
- ◆ **Approximate Weight:** 11,800 lbs.
- ◆ **General Dimensions:** 60.3" H x 58.0" W x 88.5" D.



Markey Machinery Company, Inc.

4634 East Marginal Way South, Suite C-140, Seattle, WA 98134

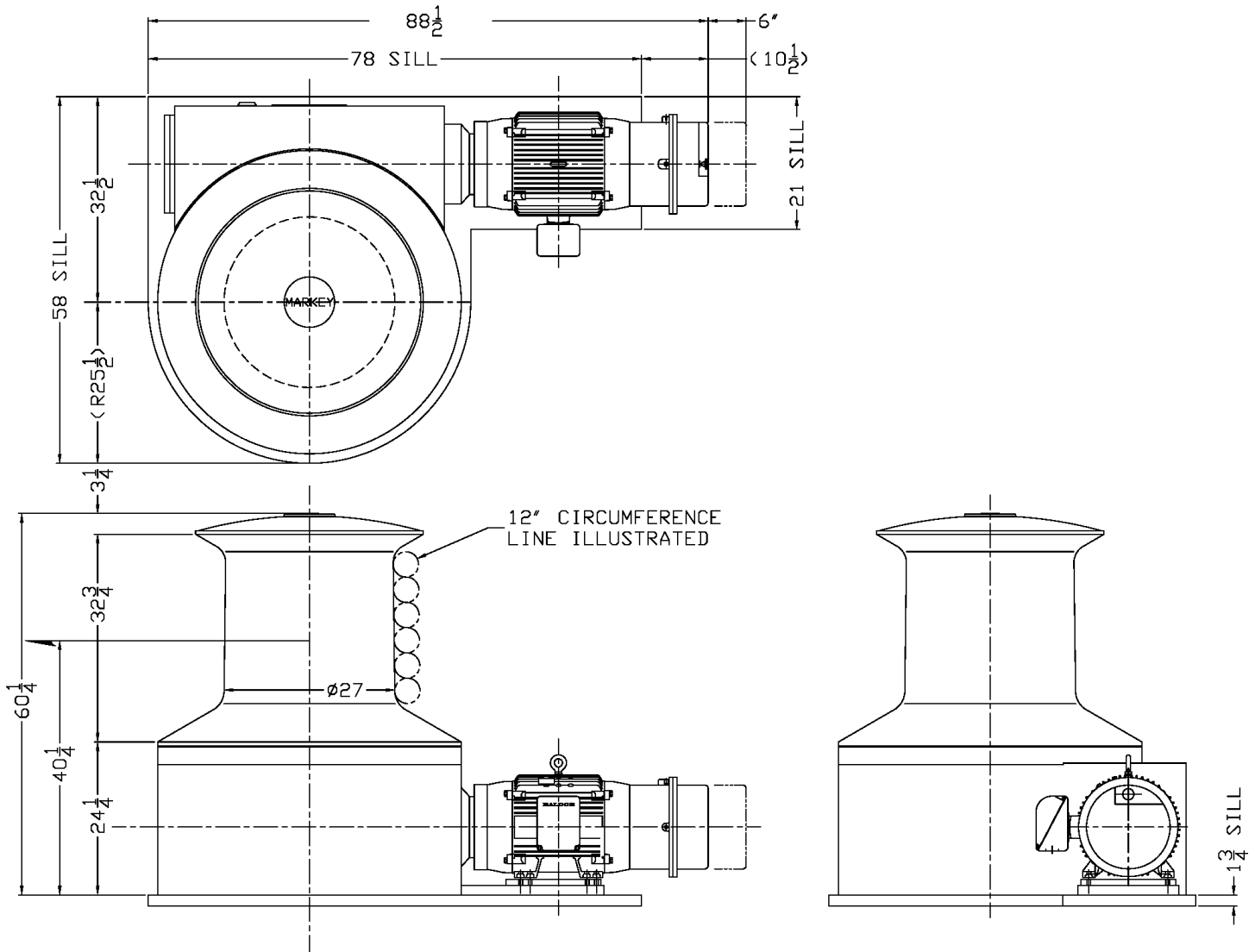
Phone: (206) 622-4697 Toll Free (800) 637-3430 Fax: (206) 623-9839

Email: info@markeymachinery.com

Represented by:

Griffin & Associates - 355 Grow Avenue NW, Bainbridge Island, WA 98110 (USA) Phone: 206-780-0509 Email: bagriffin@griffinassociates.com
JH Menge & Company, Inc - 5825 Plache Street, New Orleans, LA 70123 (USA) Phone: 504-733-4871 Email: fclatour@jhmenge.com

Markey CEWP-90 Capstan



Capstan System Options

- ◆ Hydraulic versions also available
- ◆ Alternate performance ratings available
- ◆ Two-speed versions available
- ◆ Above-deck motor or below-deck motor configurations available

© 2006

Markey's durable capstans are built to the highest quality workboat standards using materials and processes providing maximum life and minimum maintenance in marine and outdoor applications.

MARKEY

Innovation you can depend on