



CEP-40

Electric Capstan

The CEP-40 Electric Capstan is a general purpose line handling unit with a 9,000 lb static radial load capacity. The 5 HP, single-speed capstan features a reversing electric drive with pushbutton controls. Electrical components meet ABS, USCG, & IEEE-45 Marine Rules.

WINCH SYSTEM SPECIFICATIONS

- ◆ **Max. Line Pull:** 3,400 lbs (stall), 2,300 lbs @ 58 ft/min.
- ◆ **Barrel Dimensions:** 12" dia. x 12" high (working surface).
- ◆ **Electric Motor & Drive:** 5 HP marine-rated motor with space heater.
- ◆ **Braking Capacity:** Auto-brake rated at 140% of motor torque.
- ◆ **Power Control:** 3-pushbutton NEMA-4X control station (Forward, Stop, Reverse).
- ◆ **Power Requirements:** 208VAC 3 Phase, 60Hz, 15A. Other source voltage options available.
- ◆ **Approximate Weight:** 1,600 lbs.
- ◆ **General Dimensions:** 48.2" H x 26.0" W x 26.0" D.



Markey Machinery Company, Inc.

4634 East Marginal Way South, Suite C-140, Seattle, WA 98134

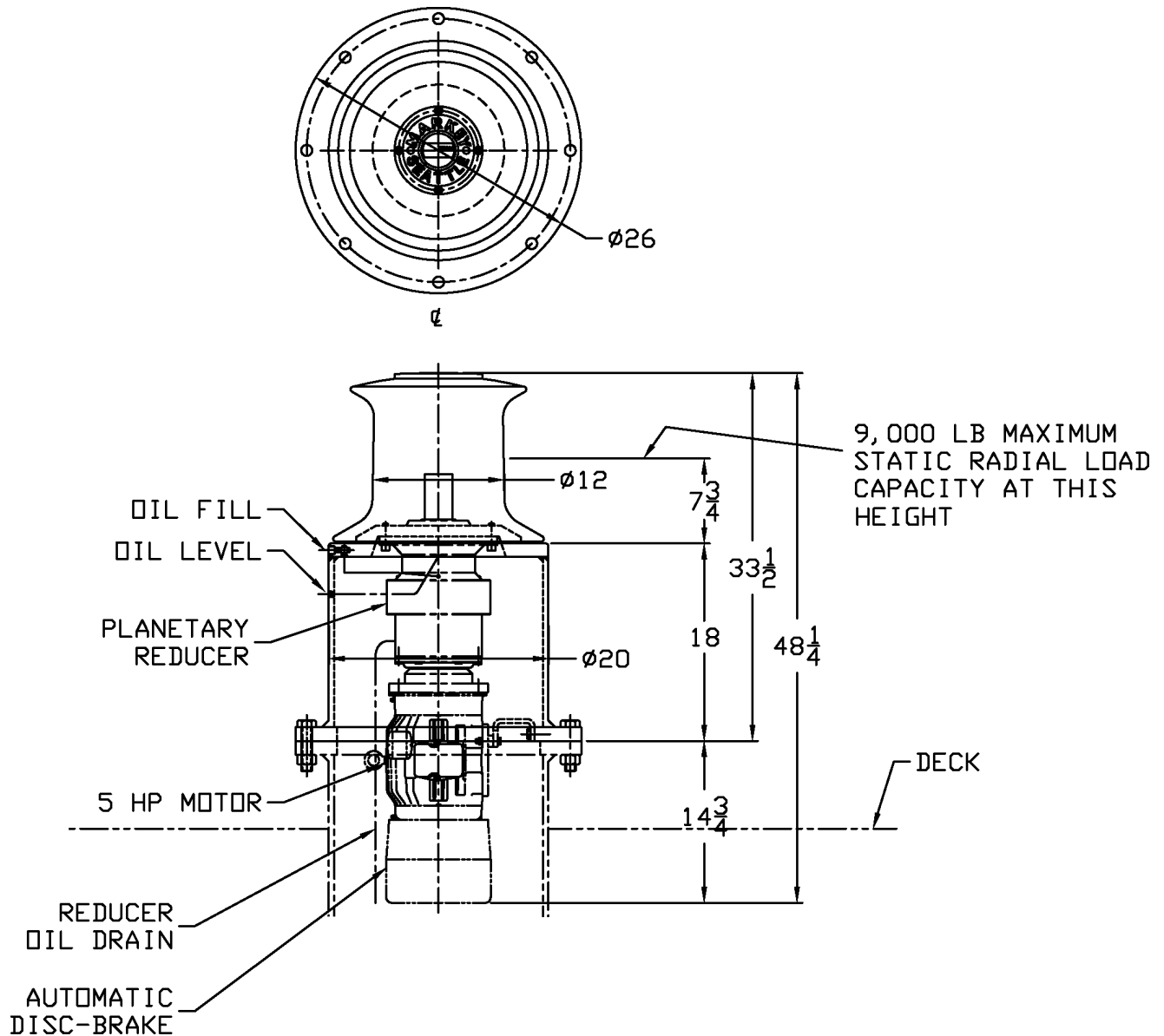
Phone: (206) 622-4697 Toll Free (800) 637-3430 Fax: (206) 623-9839

Email: info@markeymachinery.com

Represented by:

Griffin & Associates - 355 Grow Avenue NW, Bainbridge Island, WA 98110 (USA) Phone: 206-780-0509 Email: bagriffin@griffinassociates.com
JH Menge & Company, Inc - 5825 Plache Street, New Orleans, LA 70123 (USA) Phone: 504-733-4871 Email: fclatour@jhmenge.com

Markey CEP-40 Capstan



Capstan System Options

- ◆ Hydraulic versions quoted on request
- ◆ Versions available for a variety of source power configurations
- ◆ Performance ratings can be tailored to suit specific applications
- ◆ Multiple-speed models are available for more precise line handling needs
- ◆ Above-deck drive arrangements also available

© 2006

Markey's durable capstans are built to the highest quality workboat standards using materials and processes providing maximum life and minimum maintenance in marine and outdoor applications.

MARKEY

Innovation you can depend on